

SCALE: 3/8" = 1'-0" (A)

MODULE TITLE

KEYNOTE LEGEND

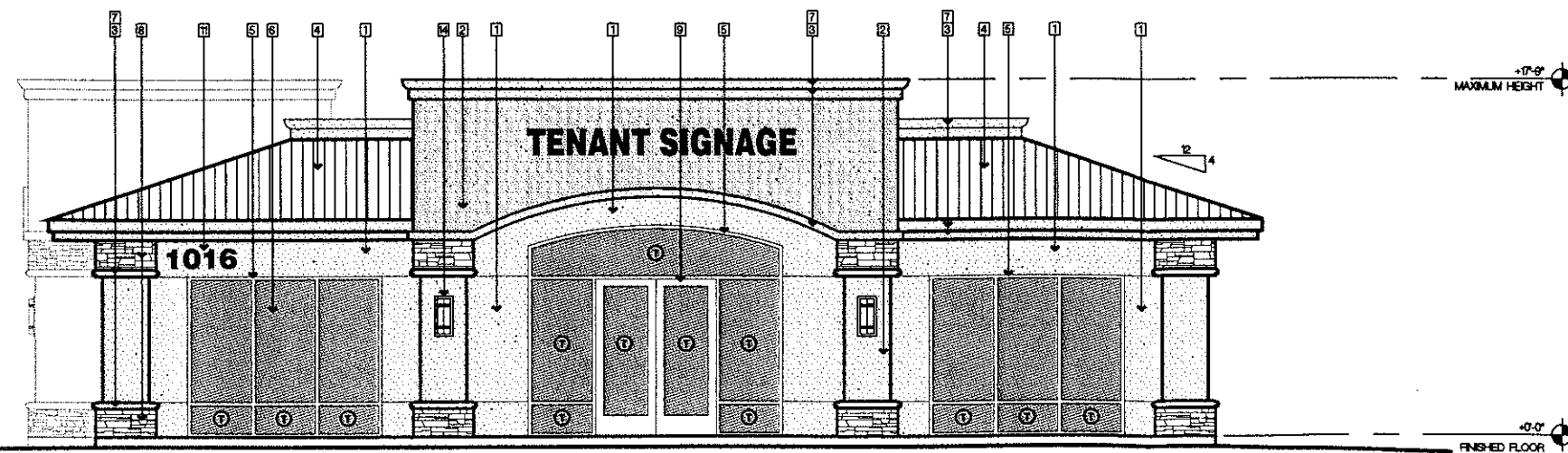
- 1 PLASTER SYSTEM
FINISH W/ ACRYLIC TOP COAT
BY DRYVIT COLOR: #108 MANOR WHITE
- 2 PLASTER SYSTEM
FINISH W/ ACRYLIC TOP COAT
BY DRYVIT COLOR: #281 MONASTERY BROWN
- 3 PLASTER SYSTEM
FINISH W/ ACRYLIC TOP COAT
BY DRYVIT COLOR: #982 TAMALE
- 4 24 GAUGE STANDING SEAM METAL ROOF WITH
DURATECH FINISH AS MFRD BY AEP SPAN HIGH
SEAM 18" CENTERS. COLOR: TERRA COTTA
- 5 CENTER GLAZED STORE FRONT SYSTEM W/ 7' INSULATED GLASS AS
MFR BY UNITED STATES ALUMINUM SERIES 451
FRAME COLOR: PUEBLO TAN
- 6 STORE FRONT GLAZING
COLOR: CLEAR
- 7 BUILT OUT FOAM DETAIL. FOAM SHALL BE MECHANICALLY
FASTENED TO STRUCTURE OVER SCRATCH COAT. FINISH
WITH ACRYLIC TOP COAT.
- 8 ROCK VENEER BY CULTURED STONE.
MODEL: SHALE PRO-FIT LEDGESTONE
COLOR: PF-8016
- 9 SERIES 400 MEDIUM STYLE STORE FRONT DOOR W/ 12"
BOTTOM RAIL BY UNITED STATES ALUMINUM - COLOR PER
STOREFRONT SYSTEM - SEE DOOR SCHEDULE.
- 10 PREMISES IDENTIFICATION - 12" ANODIZED BRONZE LETTERS
WITH MIN 7/8" WIDE STROKE. IN HELVETICA REGULAR AS
MANUFACTURED BY THE SOUTHWELL CO. (800) 950-8068.
- 11 INTERNATIONAL SYMBOL OF ACCESSIBILITY REFERENCE
W/AG1
- 12 TYPICAL PLASTER EXPANSION JOINT. LOCATED AS
INDICATED ON DRAWING.
- 13 LIGHT FIXTURE

GENERAL NOTES

- SEE PLAN FOR HORIZONTAL BUILDING DIMENSIONS.
- EXPANSION JOINT LAYOUT AS INDICATED ON THESE DRAWINGS.
JOINTS TO OCCUR IN LINE WITH ARCHITECTURAL ELEMENTS UNLESS
INDICATED OTHERWISE WITH NOTE OR DIMENSION. NOTE: TYPICAL
EXPANSION SPREADS SHOULD OCCUR IN A MANNER SO THAT THERE IS NO
MORE THAN 20'-0" BETWEEN JOINTS AND 100 SQUARE FEET MAXIMUM
FIELD.
- PLASTER CONTROL JOINT LAYOUT SHALL BE AS
RECOMMENDED BY THE AMERICAN PLASTER INSTITUTE.
- SHADED AREAS INDICATE GLAZING PANEL IN STORE
FRONT- SEE WINDOW SCHEDULE.
- ALL GLASS HEAT STRENGTHENED.
- TEMPERED/ SAFETY GLASS - SEE SHEETS A13 & G02

PLASTER SYSTEM

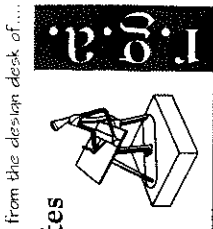
EXTERIOR PLASTER SYSTEM. PLASTER SYSTEM SHALL
CONSIST OF 3 COAT PLASTER OVER 1/2" SHEATHING.
FINAL PLASTER COAT SHALL BE ACRYLIC TOP COAT WITH
INTEGRAL COLOR PER MFR. SEE NOTES FOR COLOR.



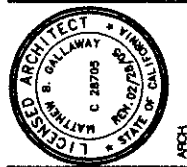
SCALE: 1/8" = 1'-0" (B)

SIDE / EAST ELEVATION

KEY NOTES



from the design desk of
Russell, Galloway, Associates
7 Sierra Nevada Court
Chico, California 95928
(530) 342-0302 fax 342-1882
www.rga-chico.com



stamps

A TENANT INFL
SMITH AND LOWEN
REAL ESTATE
1016 SKYWAY
CHICO, CA 95928
ASSESSOR'S PARCEL NUMBER: 002-210-016
plancheck/ status number: 00-000
r.g.a. project number: 04-174

1000000000

DATE	REVISION	BY
JUN 28 2005	REVISION	M. GALLOWAY
	REVISION	
	REVISION	

EXTERIOR
ELEVATIONS
ARB
4

Sheet